

## **Kentucky Virtual Library: Equipped for Diversity**

**Enid Wohlstein, Director**  
**Betsy Hughes, Electronic Resources Librarian**  
**KYVL**

### **Abstract**

Provide information resources as diverse as patrons and meet their information needs regardless of age, education level or interest. KYVL provides a broad range of tools and easy-to-use resources that will help foster information literacy and the life-long learning process. Session will explore KYVL resources for children, teens, adults, students, educators and librarians alike, including KYVL How-To guides, the Kentuckiana Digital Library, our Virtual Reference desk and professional development resources for Kentucky Librarians.



**KVL**  
**KY VIRTUAL**  
**LIBRARY**

<http://www.kyvl.org>

Email: [kyvl@ky.gov](mailto:kyvl@ky.gov)

The Kentucky Virtual Library -- Kentucky's information source.

## Find it here --

### [Find Books, Articles, and More](#)

Search Databases and Kentucky Library Catalogs...

### [Kentucky Stats](#)

Look for Kentucky Statistics...

### [Virtual Reference Desk](#)

[Browse selected websites](#)

### [Kentuckiana Digital Library](#)

Search historical documents, photos, letters and more...

## Learn --

### [How to Use KYVL](#)

[Quick Tour](#) of the site  
[How to Use KYVL: a tutorial](#)

### [How to Do Research](#)

[Learn the basics of finding and using information...](#)  
[KYVL How To Guides by Subject](#)

### [How to Use KYVL Databases](#)

[Database Descriptions](#)  
[Troubleshooting Access Issues](#)

### [About KYVL](#)

[Contact Us](#)  
[Mission](#)  
[Committees/Work Groups](#)  
[Facts and Stats](#)  
[KYVL Forms](#)  
[More About KYVL...](#)

## Communities --

### [Adult Education & Literacy](#)

### [K12 Schools](#)

### [KYVC Students](#)

### [KYVC Faculty](#)

### [KYVL Members](#)

[Ground Courier Info](#)  
[Vendor Information](#)  
[Training](#)

### [KY Library Profession](#)

[KLDivers](#)  
[KLDivers Blog](#)  
[Education](#)  
[NDLC 2008](#)



[Find Kentucky Libraries](#) | [KDLA](#) | [CPE](#) | [KYVAE](#) | [EPSB](#) | [KDE](#)

Toll free help: 1-877-588-5288 | [How to Do Research](#) | [Quick Tour](#) | [Search the KYVL Website](#) | [Comments/Suggestions](#) | [KYVL Users' Group](#)

© Kentucky Virtual Library, 1024 Capital Center Dr. Suite 320, Frankfort, KY 40601  
Phone: 502-573-1555, Fax: 502-573-0222, TT: 877-545-6177





# KYVL and its Mission

---

- All Kentuckians will have equitable access to quality library and information resources and qualified, well-trained staff to support the Kentucky Virtual Campus as well as meet broader needs for learning, working and living.
- By encouraging collaboration between libraries and partners in education, and using current and emerging technology, KYVL aims to provide all Kentuckians access to a core collection of digital information sources.

# Databases: General

---

- Access to over 30 databases
- Databases are searchable through the KYVL site or the vendor's native interface
- Broad range of topics
- Content appropriate for all ages.

# Databases: Budget cuts

---

The following databases are no longer available as part of the KYVL Core Collection:

- EBSCO-Professional Development Collection
- EBSCO-Health Source Nursing
- EBSCO-Religion & Philosophy Collection
- EBSCO-Military & Government Collection
- EBSCO-Literary Reference Center
- HW Wilson- Biography Reference Bank
- ProQuest – Computing
- ProQuest - International Index to Music Periodicals
- OCLC base package titles except Worldcat - ArticleFirst; PapersFirst; World Almanac; GPO Monthly Catalog; ProceedingsFirst; Clase and Periodica; ECO; Electronic Books; WorldCat Dissertations and Theses

The Kentucky Virtual Library -- Kentucky's information source.

## Find it here --

### [Find Books, Articles, and More](#)

Search Databases and Kentucky Library Catalogs...

### [Kentucky Stats](#)

Look for Kentucky Statistics...

### [Virtual Reference Desk](#)

[Browse selected websites](#)

### [Kentuckiana Digital Library](#)

Search historical documents, photos, letters and more...

## Learn --

### [How to Use KYVL](#)

[Quick Tour](#) of the site  
[How to Use KYVL: a tutorial](#)

### [How to Do Research](#)

[Learn the basics of finding and using information...](#)  
[KYVL How To Guides by Subject](#)

### [How to Use KYVL Databases](#)

[Database Descriptions](#)  
[Troubleshooting Access Issues](#)

### [About KYVL](#)

[Contact Us](#)  
[Mission](#)  
[Committees/Work Groups](#)  
[Facts and Stats](#)  
[KYVL Forms](#)  
[More About KYVL...](#)

## Communities --

### [Adult Education & Literacy](#)

### [K12 Schools](#)

### [KYVC Students](#)

### [KYVC Faculty](#)

### [KYVL Members](#)

[Ground Courier Info](#)  
[Vendor Information](#)  
[Training](#)

### [KY Library Profession](#)

[KLDIVERS](#)  
[KLDIVERS Blog](#)  
[Education](#)  
[NDLC 2008](#)



[Find Kentucky Libraries](#) | [KDLA](#) | [CPE](#) | [KYVAE](#) | [EPSB](#) | [KDE](#)

Toll free help: 1-877-588-5288 | [How to Do Research](#) | [Quick Tour](#) | [Search the KYVL Website](#) | [Comments/Suggestions](#) | [KYVL Users' Group](#)

© Kentucky Virtual Library, 1024 Capital Center Dr. Suite 320, Frankfort, KY 40601  
Phone: 502-573-1555, Fax: 502-573-0222, TT: 877-545-6177





# Databases: Descriptions

---



## Database Descriptions

---

This is an alphabetic list of all the databases available through KYVL.

### **Academic Search Premier -- EBSCO**

*Academic Search Premier* contains indexing for 8,176 publications, with full text for nearly 4,700 of those titles. PDF backfiles to 1975 or further are available for well over one hundred journals, and searchable cited references are provided for more than 1,000 titles.

- **Subject Coverage:** general reference, social sciences, humanities, education, computer sciences, biology, chemistry, engineering, physics, psychology, religion & theology, language and linguistics, arts and literature, medical sciences, ethnic studies, and more.
- **Vendor:** EBSCO

### **AGRICOLA -- U.S. National Agricultural Library**

*AGRICOLA* contains bibliographic records from the U.S. Department of Agriculture's National Agricultural Library. Coverage for *AGRICOLA* dates back to 1970 and includes more than 2.5 million citations. The citations are comprised of journal articles, monographs, theses, patents, software, audiovisual materials, and technical reports related to agriculture.

- **Subject Coverage:** Covers all aspects of agriculture and allied disciplines including plant and animal sciences, forestry, entomology, soil and water resources, agricultural economics, agricultural engineering, agricultural products, alternative farming practices, and food and nutrition. Also covers auxiliary subjects such as agricultural trade and marketing, rural information, and animal welfare.
- **Vendor:** EBSCO

### **Alt-Press Watch -- ProQuest**

*Alt-PressWatch* is a full text database comprised of the newspapers, magazines and journals of the alternative and independent press. Alternative newsweeklies, available in most cities, give readers alternative perspectives on politics, government, policy and culture; report on issues of government and education, local, national and international issues; and cover topics such as hunger, abuse, the environment, religion and the arts, including reviews of theater, movies, books, local attractions, etc. The magazines and journals of the alternative and independent press provide in-depth coverage of a broad range of critical issues confronting contemporary society, including ecology and the environment, grassroots organizing,

The Kentucky Virtual Library -- Kentucky's information source.

## Find it here --

### [Find Books, Articles, and More](#)

Search Databases and Kentucky Library Catalogs...

### [Kentucky Stats](#)

Look for Kentucky Statistics...

### [Virtual Reference Desk](#)

[Browse selected websites](#)

### [Kentuckiana Digital Library](#)

Search historical documents, photos, letters and more...

## Learn --

### [How to Use KYVL](#)

[Quick Tour](#) of the site  
[How to Use KYVL: a tutorial](#)

### [How to Do Research](#)

[Learn the basics of finding and using information...](#)  
[KYVL How To Guides by Subject](#)

### [How to Use KYVL Databases](#)

[Database Descriptions](#)  
[Troubleshooting Access Issues](#)

### [About KYVL](#)

[Contact Us](#)  
[Mission](#)  
[Committees/Work Groups](#)  
[Facts and Stats](#)  
[KYVL Forms](#)  
[More About KYVL...](#)

## Communities --

### [Adult Education & Literacy](#)

### [K12 Schools](#)

### [KYVC Students](#)

### [KYVC Faculty](#)

### [KYVL Members](#)

[Ground Courier Info](#)  
[Vendor Information](#)  
[Training](#)

### [KY Library Profession](#)

[KLDIVERS](#)  
[KLDIVERS Blog](#)  
[Education](#)  
[NDLC 2008](#)



[Find Kentucky Libraries](#) | [KDLA](#) | [CPE](#) | [KYVAE](#) | [EPSB](#) | [KDE](#)

Toll free help: 1-877-588-5288 | [How to Do Research](#) | [Quick Tour](#) | [Search the KYVL Website](#) | [Comments/Suggestions](#) | [KYVL Users' Group](#)

© Kentucky Virtual Library, 1024 Capital Center Dr. Suite 320, Frankfort, KY 40601  
Phone: 502-573-1555, Fax: 502-573-0222, TT: 877-545-6177



# Databases: Troubleshooting

## Troubleshooting Tools

### IP Problems

[Check IP number on your machine.](#) - This is what the world sees as your IP address. If you are going through a proxy to access the Internet, the world will see the IP number for the last proxy you went through.

[A second way to check your IP number](#)

Are you able to get into all three of the links below?

- o <http://search.ebscohost.com/>
- o <http://newfirstsearch.oclc.org/FSIP/>
- o Click on "Find Books, Articles and More" on the [main KYVL page](#).

## Proxies and Firewalls

The Kentucky Virtual Library uses IP authentication for some Internet based databases. If your organization/library/school uses a proxy server or some form of internet caching system (such as Cacheflow) to increase Internet performance, these databases will not authenticate properly. It is important that you allow these sites to bypass the proxy or caching system thus allowing the end user to achieve direct communication with these databases and not a cached version of the site. Generally this means adding these sites to a "pass-through" list or filter. Consult the documentation of your proxy/caching device for the specific instructions.

It is important to add these to your list or filter. Because of their dynamic nature, the sites become very difficult to use if they are not passed through and can return wrong and irrelevant results to your users, or impede access completely.

<http://www.kyvl.org/html/about/databases.shtml#prox>

The Kentucky Virtual Library -- Kentucky's information source.

## Find it here --

### [Find Books, Articles, and More](#)

[Search Databases and Kentucky Library Catalogs...](#)

### [Kentucky Stats](#)

[Look for Kentucky Statistics...](#)

### [Virtual Reference Desk](#)

[Browse selected websites](#)

### [Kentuckiana Digital Library](#)

[Search historical documents, photos, letters and more...](#)

## Learn --

### [How to Use KYVL](#)

[Quick Tour of the site](#)  
[How to Use KYVL: a tutorial](#)

### [How to Do Research](#)

[Learn the basics of finding and using information...](#)  
[KYVL How To Guides by Subject](#)

### [How to Use KYVL Databases](#)

[Database Descriptions](#)  
[Troubleshooting Access Issues](#)

### [About KYVL](#)

[Contact Us](#)  
[Mission](#)  
[Committees/Work Groups](#)  
[Facts and Stats](#)  
[KYVL Forms](#)  
[More About KYVL...](#)

## Communities --

### [Adult Education & Literacy](#)

### [K12 Schools](#)

### [KYVC Students](#)

### [KYVC Faculty](#)

### [KYVL Members](#)

[Ground Courier Info](#)  
[Vendor Information](#)  
[Training](#)

### [KY Library Profession](#)

[KLDivers](#)  
[KLDivers Blog](#)  
[Education](#)  
[NDLC 2008](#)



[Find Kentucky Libraries](#) | [KDLA](#) | [CPE](#) | [KYVAE](#) | [EPSB](#) | [KDE](#)

Toll free help: 1-877-588-5288 | [How to Do Research](#) | [Quick Tour](#) | [Search the KYVL Website](#) | [Comments/Suggestions](#) | [KYVL Users' Group](#)

© Kentucky Virtual Library, 1024 Capital Center Dr. Suite 320, Frankfort, KY 40601  
Phone: 502-573-1555, Fax: 502-573-0222, TT: 877-545-6177



# Database Access

Search a Group of Catalogs or Databases:

**Kentucky Library Catalogs**

General Reference | Science & Medicine

Education | Business & Economics

Arts & Humanities | Social Sciences

K-8 Grade Students

Create My Own Group of Catalogs and Databases

Select a Single Catalog or Database

User-Defined Database Groups (if any):

Connect directly to:

EBSCO | Grolier Encyclopedias | NovelList | OCLC FirstSearch | ProQuest | Search-asaurus

Biographies HW Wilson | International Index to Music Periodicals | Kentuckiana Digital Library | Literary Reference Center | LISTA | Teacher's Reference Center

The Kentucky Virtual Library -- Kentucky's information source.

## Find it here --

### [Find Books, Articles, and More](#)

Search Databases and Kentucky Library Catalogs...

### [Kentucky Stats](#)

Look for Kentucky Statistics...

### [Virtual Reference Desk](#)

[Browse selected websites](#)

### [Kentuckiana Digital Library](#)

Search historical documents, photos, letters and more...

## Learn --

### [How to Use KYVL](#)

[Quick Tour](#) of the site  
[How to Use KYVL: a tutorial](#)

### [How to Do Research](#)

[Learn the basics of finding and using information...](#)  
[KYVL How To Guides by Subject](#)

### [How to Use KYVL Databases](#)

[Database Descriptions](#)  
[Troubleshooting Access Issues](#)

### [About KYVL](#)

[Contact Us](#)  
[Mission](#)  
[Committees/Work Groups](#)  
[Facts and Stats](#)  
[KYVL Forms](#)  
[More About KYVL...](#)

## Communities --

### [Adult Education & Literacy](#)

### [K12 Schools](#)

### [KYVC Students](#)

### [KYVC Faculty](#)

### [KYVL Members](#)

[Ground Courier Info](#)  
[Vendor Information](#)  
[Training](#)

### [KY Library Profession](#)

[KLDivers](#)  
[KLDivers Blog](#)  
[Education](#)  
[NDLC 2008](#)



[Find Kentucky Libraries](#) | [KDLA](#) | [CPE](#) | [KYVAE](#) | [EPSB](#) | [KDE](#)

Toll free help: 1-877-588-5288 | [How to Do Research](#) | [Quick Tour](#) | [Search the KYVL Website](#) | [Comments/Suggestions](#) | [KYVL Users' Group](#)

© Kentucky Virtual Library, 1024 Capital Center Dr. Suite 320, Frankfort, KY 40601  
Phone: 502-573-1555, Fax: 502-573-0222, TT: 877-545-6177



# The Kentucky Virtual Library presents: HOW TO DO RESEARCH

Step 1. Plan:

START HERE



Step 3. Take Notes:



**GLOSSARY**  
a list of useful words

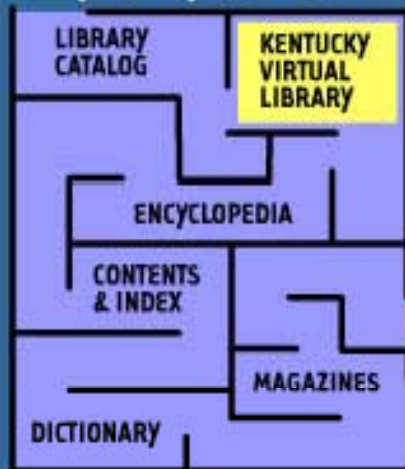
Step 6. Evaluate

WELL DONE!

RETURN to ENTRY PORTAL



Step 2. Search for information:



WHAT IF YOU CAN'T FIND ANYTHING?



**SEARCH THE WEB**

Step 4. Use the information:



SHARE YOUR INFORMATION

Step 5. Report

The Kentucky Virtual Library -- Kentucky's information source.

## Find it here --

### [Find Books, Articles, and More](#)

Search Databases and Kentucky Library Catalogs...

### [Kentucky Stats](#)

Look for Kentucky Statistics...

### [Virtual Reference Desk](#)

[Browse selected websites](#)

### [Kentuckiana Digital Library](#)

Search historical documents, photos, letters and more...

## Learn --

### [How to Use KYVL](#)

[Quick Tour](#) of the site  
[How to Use KYVL: a tutorial](#)

### [How to Do Research](#)

[Learn the basics of finding and using information...](#)  
[KYVL How To Guides by Subject](#)

### [How to Use KYVL Databases](#)

[Database Descriptions](#)  
[Troubleshooting Access Issues](#)

### [About KYVL](#)

[Contact Us](#)  
[Mission](#)  
[Committees/Work Groups](#)  
[Facts and Stats](#)  
[KYVL Forms](#)  
[More About KYVL...](#)

## Communities --

### [Adult Education & Literacy](#)

### [K12 Schools](#)

### [KYVC Students](#)

### [KYVC Faculty](#)

### [KYVL Members](#)

[Ground Courier Info](#)

[Vendor Information](#)  
[Training](#)

### [KY Library Profession](#)

[KLDivers](#)  
[KLDivers Blog](#)  
[Education](#)  
[NDLC 2008](#)



[Find Kentucky Libraries](#) | [KDLA](#) | [CPE](#) | [KYVAE](#) | [EPSB](#) | [KDE](#)

Toll free help: 1-877-588-5288 | [How to Do Research](#) | [Quick Tour](#) | [Search the KYVL Website](#) | [Comments/Suggestions](#) | [KYVL Users' Group](#)

© Kentucky Virtual Library, 1024 Capital Center Dr. Suite 320, Frankfort, KY 40601  
Phone: 502-573-1555, Fax: 502-573-0222, TT: 877-545-6177





## Other Services: Statewide Courier Service

---

- Ground courier delivery service to provide delivery of Interlibrary Loan requests between participating libraries within Kentucky to promote resource sharing and delivery of information resources.
- A prescribed number of days are provided at no fee to the public libraries and state-assisted academic libraries as well as KCTCS.

The Kentucky Virtual Library -- Kentucky's information source.

## Find it here --

### [Find Books, Articles, and More](#)

Search Databases and Kentucky Library Catalogs...

### [Kentucky Stats](#)

Look for Kentucky Statistics...

### [Virtual Reference Desk](#)

[Browse selected websites](#)

### [Kentuckiana Digital Library](#)

Search historical documents, photos, letters and more...

## Learn --

### [How to Use KYVL](#)

[Quick Tour](#) of the site  
[How to Use KYVL: a tutorial](#)

### [How to Do Research](#)

[Learn the basics of finding and using information...](#)  
[KYVL How To Guides by Subject](#)

### [How to Use KYVL Databases](#)

[Database Descriptions](#)  
[Troubleshooting Access Issues](#)

### [About KYVL](#)

[Contact Us](#)  
[Mission](#)  
[Committees/Work Groups](#)  
[Facts and Stats](#)  
[KYVL Forms](#)  
[More About KYVL...](#)

## Communities --

### [Adult Education & Literacy](#)

### [K12 Schools](#)

### [KYVC Students](#)

### [KYVC Faculty](#)

### [KYVL Members](#)

[Ground Courier Info](#)  
[Vendor Information](#)  
[Training](#)

### [KY Library Profession](#)

[KLDivers](#)  
[KLDivers Blog](#)  
[Education](#)  
[NDLC 2008](#)



[Find Kentucky Libraries](#) | [KDLA](#) | [CPE](#) | [KYVAE](#) | [EPSB](#) | [KDE](#)

Toll free help: 1-877-588-5288 | [How to Do Research](#) | [Quick Tour](#) | [Search the KYVL Website](#) | [Comments/Suggestions](#) | [KYVL Users' Group](#)

© Kentucky Virtual Library, 1024 Capital Center Dr. Suite 320, Frankfort, KY 40601  
Phone: 502-573-1555, Fax: 502-573-0222, TT: 877-545-6177





## Other Services: Access to Master Agreements

---

KYVL members have access to the core collection of databases for which KYVL Master Agreements and may offer access to their users. In addition to the core database collection, each library, member, or community also has the option to purchase access and negotiate licensing requirements, etc. to additional databases of its choice from vendors who have received a Master Agreement. KYVL members expect to also negotiate additional discounts based upon other products purchased from the same vendor or for other reasons agreed upon by both parties. KYVL members may also request additional training required beyond the KYVL master agreement minimums, as needed, and members would be responsible for additional costs to be negotiated with each vendor.

### **TERMS OF MASTER AGREEMENT AND RENEWEL OPTIONS**

The initial term of the Master Agreement shall be for a period of two (2) years from the effective date of the Award of Master Agreement.

This Master Agreement may be renewed at the completion of the initial Master Agreement period for two (2) additional two (2) year periods upon the mutual agreement of the Parties. Such mutual agreement shall take the form of an addendum to the Master Agreement.



# Other Services: Access to Master Agreements



## KYVL Database Vendors

KYVL has signed Master Agreements with the following database vendors. Below you will find basic information about each vendor, including their Master Agreement numbers, the scope of the Master Agreement and which of their products, if any, are part of the KYVL core collection. For more information about individual vendors, their products and contact information, please choose a link from the menu to the left.

### VENDORS AT-A-GLANCE:

Vendors	New MA #	Products in KYVL Core
CQ Press	MA75807000020511	No
EBSCO	MA75807000020521	Yes
Encyclopaedia Britannica Inc	MA75807000020541	No
Gale Group	MA75807000020471	No
H.W. Wilson	MA75807000020481	Yes
Learning Express LLC	MA75807000020491	No
NewsBank	MA75807000020451	No
OCLC	MA75807000020501	Yes
ProQuest	MA75807000020441	Yes
Scholastic Library Publishing (Grolier)	MA75807000020461	Yes
Thinkmap, Inc.	MA75807000020531	No

CQ Press  
 ★ **Coming Soon!** ★ EBSCO  
 Encyclopaedia Britannica  
 ★ **Coming Soon!** ★ Gale  
 ★ **Coming Soon!** ★  
 H.W. Wilson  
 Learning Express  
 ★ **Coming Soon!** ★ NewsBank  
 OCLC  
 ProQuest  
 Scholastic (Grolier)  
 Thinkmap

---

[Return to KYVL Members page](#)

The Kentucky Virtual Library -- Kentucky's information source.

## Find it here --

### [Find Books, Articles, and More](#)

Search Databases and Kentucky Library Catalogs...

### [Kentucky Stats](#)

Look for Kentucky Statistics...

### [Virtual Reference Desk](#)

[Browse selected websites](#)

### [Kentuckiana Digital Library](#)

Search historical documents, photos, letters and more...

## Learn --

### [How to Use KYVL](#)

[Quick Tour](#) of the site  
[How to Use KYVL: a tutorial](#)

### [How to Do Research](#)

[Learn the basics of finding and using information...](#)  
[KYVL How To Guides by Subject](#)

### [How to Use KYVL Databases](#)

[Database Descriptions](#)  
[Troubleshooting Access Issues](#)

### [About KYVL](#)

[Contact Us](#)  
[Mission](#)  
[Committees/Work Groups](#)  
[Facts and Stats](#)  
[KYVL Forms](#)  
[More About KYVL...](#)

## Communities --

### [Adult Education & Literacy](#)

### [K12 Schools](#)

### [KYVC Students](#)

### [KYVC Faculty](#)

### [KYVL Members](#)

[Ground Courier Info](#)  
[Vendor Information](#)  
[Training](#)

### [KY Library Profession](#)

[KLDivers](#)  
[KLDivers Blog](#)  
[Education](#)  
[NDLC 2008](#)



[Find Kentucky Libraries](#) | [KDLA](#) | [CPE](#) | [KYVAE](#) | [EPSB](#) | [KDE](#)

Toll free help: 1-877-588-5288 | [How to Do Research](#) | [Quick Tour](#) | [Search the KYVL Website](#) | [Comments/Suggestions](#) | [KYVL Users' Group](#)

© Kentucky Virtual Library, 1024 Capital Center Dr. Suite 320, Frankfort, KY 40601  
Phone: 502-573-1555, Fax: 502-573-0222, TT: 877-545-6177



# Other Services: Kentuckiana Digital Library



The Kentuckiana Digital Library is your gateway to rare and unique digitized collections housed in Kentucky archives. These digital collections are built to enhance scholarship, research and lifelong learning.

[About](#) | [Copyright & Use](#) | [Guidelines & Tools](#)

**FEATURED ITEM:**



**The Lyle Family Photographic Collection**  
Find over 80,000 photographic images, 100,000 newspaper pages, 230,000 book pages, hundreds of oral histories, and maps documenting the history and heritage of Kentucky.

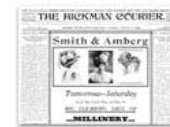
**SPONSORS:**



Page Last Updated: 1/25/2008.



Finding Aids



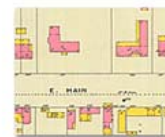
Newspapers



Books



Images



Maps



Oral Histories



Manuscripts



Journals

## THEMED COLLECTIONS

### A. King Coal

Development of the Coal Industry from Industrialization to present

Focus on company/miner relations, living & working conditions, and technological & political impacts

Important People/Organizations: John C.C. Mayo, Consolidation Coal Company, United Mine Workers of America (UMWA), State Inspector of Mines, Harry Caudill

Important Places/Events: Western/Eastern Coalfields, Middlesboro, Jenkins, Harlan County, Federal Coal Mine Health and Safety Act of 1969, Coal Town Booms

Important concepts: coal camp, coal town, broad form deed, company store, union, scrip, surface mining vs. deep-shaft mining, mechanization, boom and bust economy

## 1870-1970 Industrial Kentucky





# Other Services: Kentuckiana Digital Library

## THEMED COLLECTION CONTENTS

### Essential Questions:

What risks were miners taking as a part of their job, and why?

How did the technological progress of transportation effect coal mining in Kentucky?

How did miners deal with the exploitative labor practices of coal companies and their coal towns?

New workgroup to facilitate creation of these collections for K12 use.

### Core Content:

#### 4th Grade :

SS-04-3.1.1  
Students will describe scarcity and explain how scarcity requires people in Kentucky to make economic choices (e.g., use of productive resources - natural, human, capital) and incur opportunity costs.

SS-04-4.4.1  
Students will explain and give examples of how people adapted to/modified the physical environment (e.g., natural resources, physical geography, natural disasters) to meet their needs during the history of Kentucky and explain its impact on the environment today.

SS-04-5.2.3  
Students will compare change over time in communication, technology, transportation and education in Kentucky.

#### High School :

SS-HS-3.4.1  
Students will analyze the changing relationships among business, labor and government (e.g., unions, anti-trust laws, tariff policy, price controls, subsidies, tax incentives) and how each has affected production, distribution and consumption in the United States or the world.




# New Projects: Facebook

facebook Home Profile Friends Inbox Betsy Hughes

---

**Kentucky Virtual Library** [Browse more Places](#)



Location: 1024 Capitol Center Drive, Suite 320  
Frankfort, KY, 40601-8204

Phone: 877 588 5288

Edit Page

Edit Admins

Send an Update to Fans

Promote Page with an Ad

View Updates

Remove me from Fans

View Insights

Share [+](#)

**Discussion Board** [edit](#) [X](#)


There are no discussions.  
[Start the first topic.](#)

**Posted Items** [edit](#) [X](#)

Displaying 3 of 16 posted items [See All](#)

**Post a link:**  [Post](#)

 **YouTube - KYVirtualLibrary's Channel**  
Source: www.youtube.com




“ Kentucky Virtual Library has a channel on YouTube. Check it out! ”

Posted by Kentucky Virtual Library

 **KYVL: Member Libraries**  
Source: www.kyvl.org

Kentucky Virtual Library (KYVL), as part of the Council Postsecondary Education (CPE), has been severely impacted by budget reductions applied to agencies due to decreased state funding. Since January 2009...



**Quick Links to KYVL** [edit](#) [X](#)

- [How to Use KYVL](#)
- [Search our Catalogs and Databases](#)
- [Look Up Kentucky Statistics](#)
- [Visit Our Virtual Reference Desk](#)
- [Visit the Kentuckiana Digital Library and Archive](#)

**Photos** [edit](#) [X](#)

There are no photos by Kentucky Virtual Library.  
[Add Photos.](#)

No one has added fan photos.  
[Edit Settings.](#)




# New Projects: YouTube

**YouTube** [English](#) [Sign Up](#) | [QuickList](#) | [Help](#) | [Sign In](#)  
[Videos](#) | [Channels](#) | [Community](#) | [Upload](#)

[Videos](#) | [Favorites](#) | [Playlists](#) | [Groups](#) | [Friends](#) | [Subscribers](#) | [Subscriptions](#)

### KYVirtualLibrary's Channel



**KYVirtualLibrary**  
Joined: May 29, 2007  
Last Sign In: 1 month ago  
Videos Watched: 23  
Subscribers: 0  
Channel Views: 214

Name: [Kentucky Virtual Library](#)  
Country: [United States](#)   
Website: <http://www.kyv.org>

[Report profile image violation](#)


### Connect with KYVirtualLibrary

[Send Message](#)  
 [Add Comment](#)  
 [Share Channel](#)

<http://www.youtube.com/KYVirtualLibrary>

### Bulletins

From	Bulletin
There are no bulletins.	



**KY Virtual Library For K-12 Schools**  
Elementary School Students  
Middle School Students  
High School Students  
Teachers

**"KY VIRTUAL LIBRARY" SUMMER**

View the "KY Virtual Library" Summer...  
Webcast 2008 - 11/28/08 10:00 AM  
View the "KY Virtual Library" Summer...

[Create a KYVL PSA Contest 2008 - Jones Middle School](#)  
From: [KYVirtualLibrary](#)  
Views: 46

**Videos (20)** [Subscribe to KYVirtualLibrary's videos](#)

## New Projects: Second Life





## New Projects: MetaLib Federated Search

---

- Have a Master Agreement with Ex Libris for both MetaLib federated search and SFX link resolver.
- In the process of setting up KYVL instance of MetaLib/SFX.
- All KYVL members can have access to the Master Agreement – can set up own portal hosted on the VL server or on own server.
- Individual member portals can integrate proprietary resources with VL resources and customized interfaces.
- Currently forming a consortia for interested members and working out MOA and pricing structure.
- Already have willing test site
- Ongoing process – contact Enid Wohlstein for more information

## New Projects: Passwords

---

- Working on library-specific passwords for all KYVL members.
- Passwords will work on KYVL website and all vendor sites
- Will increase security of KYVL resources
- Will allow for collection of more granular statistics
- Hope to roll-out new logins January 2009
- Still working out process for disseminating logins – please email [kyvl@ky.gov](mailto:kyvl@ky.gov) if you would like to be added to our contact list.

- Launching first quarter 2009
- Emphasis on the user
- Will be integrating Web 2.0 tools – Wikis, blogs, Facebook, etc.
- Adding new training materials
- Would love input on what our members would like to see



## quick links

- [Log In from Home](#)
- [Tutorials](#)
- [How to Cite Sources](#)
- [General Reference](#)

## for librarians

- [KYVL Courier / Pick-Up Form Login](#)
- [Ground Courier Problem Report Form](#)
- [Submit Your Resource Sharing Statistics](#)
- [More...](#)

## for members

- [Master Agreements](#)
- [Voyager Consortium](#)
- [MetaLib Consortium](#)
- [Training Sessions and Materials Available](#)

## search

Search the Collections for:

[Advanced Search](#)

## kentuckiana digital library

Find over 80,000 photographic images, 100,000 newspaper pages, 230,000 book pages, hundreds of oral histories, and maps documenting the history and heritage of Kentucky.

## internet research guide

The Internet Research Guide provides access to websites with statistics and credible information on a variety of subjects.

## newsfeed

### Update on the 2008 Database Cuts

Thank you for your pledges, support and all around encouragement! All in all, despite not raising the amounts needed, we did have an outpouring of support from our membership. We thank you, sincerely, for your participation on the pledge drive and survey.

Good News!! *Alt-Press Watch* and *Career & Technical* from ProQuest will continue to be offered in the KYVL core collection. These were the first and second priority products to retain, as recommended by the KYVL Collections Workgroup and approved by the Virtual Library. For more information visit: [The 2008 KYVL Database Cuts Homepage](#).

## kids

### for grades 1-6

- [KYVL for Kids! Research Portal](#)

### for grades 7-12

- [Middle School Students](#)
- [High School Students](#)

### for teachers

- [KYVL for Kids! Teacher Toolbox](#)
- [Resources for Teachers](#)

## family historians

### KY Records Research

- [Kentucky Department for Libraries and Archives Research Services](#)
- [Kentucky Vital Records Index Search](#)
- [Kentucky Historical Society Database Search](#)

### National Records Research

- [RootsWeb Databases](#)
- [FamilySearch Records Search](#)
- [National Archives and Records Administration Genealogy Guide](#)





We are here to help!

## How To Reach Us

### [Map and Directions](#)

**Address:**

1024 Capital Center Dr.  
Suite 320  
Frankfort, KY 40601

**Phone:** 502-573-1555

**Toll Free:** 877-588-5288

**Fax:** 502-573-0222

**TT:** 877-545-6177

**Email:** [kyvl@ky.gov](mailto:kyvl@ky.gov)

### **Staff**

Enid Wohlstein, Director

502-573-1555 x295

[Enid.Wohlstein@ky.gov](mailto:Enid.Wohlstein@ky.gov)

Betsy Hughes, Electronic Resources Librarian

502-573-1555 x271

[Betsy.Hughes@ky.gov](mailto:Betsy.Hughes@ky.gov)

Martha Dyer, Executive Secretary

502-573-1555 x291

[Martha.Dyer@ky.gov](mailto:Martha.Dyer@ky.gov)

*Questions?*